

# \$SMART BUYS

## September 2010

### CIC 200™ SMOOTH-BORE™ PLASTIC DRILLS HI-MOLYBDENUM TOOL STEEL - GOLD FINISH

- Maximum Strength and lubricity
- Precision ground 60° point assures smooth, gradual penetration without cracking or chipping
- Unique 0° rake angle eliminates grabbing when breaking through plastics, acrylics and laminates

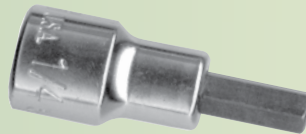
SIZE	OVERALL LENGTH	FLUTE LENGTH	P/N	SPECIAL PRICE
1/8"	2-1/2"	1-3/8"	61480	\$5.95/ea.
5/32"	2-7/8"	1-3/4"	61482	\$6.95/ea.
3/16"	3-3/16"	2"	61484	\$7.95/ea.
1/4"	3-9/16"	2-5/16"	61486	\$9.95/ea.
5/16"	3-5/16"	1-5/8"	61488	\$13.95/ea.
3/8"	3-5/8"	1-15/16"	61490	\$19.95/ea.
7/16"	4"	2-3/16"	61492	\$21.95/ea.
1/2"	4-1/4"	2-7/16"	61494	\$25.95/ea.



All sizes 1/4" and over have 1/4" shanks

### HEX BIT SOCKETS 3/8" SQUARE DRIVE

- Precision tolerances
- Heat treated alloy steel
- Black finish



SIZE	P/N	SPECIAL PRICE
7/64"	70380	\$7.95/ea.
1/8"	70381	\$7.95/ea.
9/64"	70382	\$7.95/ea.
5/32"	70383	\$7.95/ea.
3/16"	70384	\$7.95/ea.
7/32"	70385	\$7.95/ea.
1/4"	70386	\$9.95/ea.
5/16"	70387	\$9.95/ea.
3/8"	70388	\$7.95/ea.

### REUSABLE AIR BRAKE FITTINGS - BRASS HOSE CONNECTORS WITH SPRING GUARD

#### ASSEMBLY INSTRUCTIONS:

1. Slide nut and sleeve onto hose. Make sure bevel edge of sleeve faces out toward fitting.
2. Push hose into fitting until it bottoms, and tighten nut down all the way.



HOSE I.D.	PIPE THREAD	INDUSTRY TYPE	P/N	SPECIAL PRICE
3/8"	1/4"	15536	53605	\$5.95/ea.
3/8"	3/8"	23907	53606	\$5.95/ea.
3/8"	1/2"	15535	53607	\$6.95/ea.



Prices Effective September 1<sup>st</sup> through September 30<sup>th</sup> 2010 - Limit 2 of Any Item Per Customer

# SALE! SMART BUYS

## September 2010

### CIC 200™ SUR-SEAL TERMINALS BUTT CONNECTORS

Heat shrink tubing and tin plated high conductivity copper connectors are bonded together to form a moisture-proof seal, preventing corrosion and voltage drop.

- Just crimp and heat
- Red / 22-18 wire range
- Blue / 16-14 wire range
- Yellow / 12-10 wire range



**RED**  
22-18  
P/N 2841

**Special Price** \$0.99/ea.  
Pkg. 20



**BLUE**  
16-14  
P/N 2842

**Special Price** \$0.99/ea.  
Pkg. 20

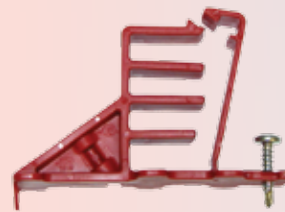


**YELLOW**  
12-10  
P/N 2843

**Special Price** \$0.99/ea.  
Pkg. 20

### MULTIPLE CABLE ORGANIZERS

- Quickly secures multiple cable runs such as NM/ROMEX, Coaxial and CAT 5, as well as other cable with diameters less than 1/4" (6.3mm) on a stud
- Clean professional installation
- Fast easy installation with one nail for wood or one screw for metal studs
- Patent pending "snap lock gate" quickly secures all cables without restricting them
- Made of fire-retardant high density polypropylene
- National Electrical Code 300-4-(D) Compliant



Screw Mount - 20 Per Box  
P/N 2966



Nail Mount - 20 Per Box  
P/N 2967

**Special Price** \$8.95/box

### WIRE MARKERS

- Printed Booklet
- 45 Pre-cut Tyvek pieces with adhesive backing
- For wires and terminals
- For easy identification
- Legend: 0 to 9
- Includes common stud size chart and trade size conductors of conduit or tubing



0	0	1	1	2	2	3	3	4	4	5	5	6	6	7	7	8	8	9	9
0	0	1	1	2	2	3	3	4	4	5	5	6	6	7	7	8	8	9	9
0	0	1	1	2	2	3	3	4	4	5	5	6	6	7	7	8	8	9	9
0	0	1	1	2	2	3	3	4	4	5	5	6	6	7	7	8	8	9	9
0	0	1	1	2	2	3	3	4	4	5	5	6	6	7	7	8	8	9	9
0	0	1	1	2	2	3	3	4	4	5	5	6	6	7	7	8	8	9	9
0	0	1	1	2	2	3	3	4	4	5	5	6	6	7	7	8	8	9	9
0	0	1	1	2	2	3	3	4	4	5	5	6	6	7	7	8	8	9	9

P/N 8474

**Special Price** \$6.95/ea.

Prices Effective September 1<sup>st</sup> through September 30<sup>th</sup> 2010 – Limit 2 of Any Item Per Customer

# \$SMART BUYS

## September 2010

**SALE!**

### CIC 200™ BI-METAL RECIPROCATING SAW BLADES METAL CUTTING - 1/2" SHANK

**The More  
You Save!  
The More  
You Win!**

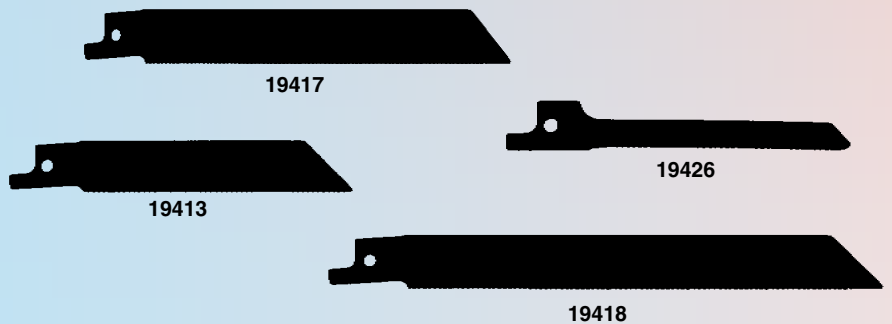
- Bi-metal construction of high cobalt content
- High speed steel teeth welded to shatter-resistant alloy steel back
- Faster cutting and greater durability
- Bi-metal blades reduce breakage
- Lasts longer than conventional carbon and all high speed steel blades

#### WIDER, THICKER BLADES:

- PROVIDE HIGHER BEAM STRENGTH AND GREATER RIGIDITY ALLOWING MORE FEED PRESSURE FOR FASTER CUTTING WITH LESS DISTORTION

#### MATRIX CUTTING EDGE:

- HIGH COBALT CONTENT (8%) FOR BETTER SHOCK AND HEAT RESISTANCE - ASSURING FASTER CUTTING, LONGER LIFE AND LESS TOOTH STRIPPAGE



TEETH PER INCH	DIMENSIONS L x W x T	RECOMMENDED USES	P/N	SPECIAL PRICE
14	4 x 3/4 x .035	Heavy gauge metals 1/8" and thicker. Bar stock and angles.	19413	3.95 ea. /Pkg. 5
14	6 x 3/4 x .035	Heavy gauge metals 1/8" and thicker. Bar stock and angles.	19414	6.95 ea. /Pkg. 5
18	4 x 3/4 x .035	Heavy gauge metals 18 gauge to 1/8" thick. Conduit, pipe, channels and tubing.	19416	3.95 ea. /Pkg. 5
18	6 x 3/4 x .035	Heavy gauge metals 18 gauge to 1/8" thick. Conduit, pipe, channels and tubing.	19417	6.95 ea. /Pkg. 5
18	8 x 3/4 x .035	Heavy gauge metals 18 gauge to 1/8" thick. Conduit and tubing.	19418	6.95 ea. /Pkg. 5
18	12 x 3/4 x .035	Heavy gauge metals 18 gauge to 1/8" thick. Conduit, pipe, channels and tubing.	19428	9.95 ea. /Pkg. 5
24	4 x 3/4 x .035	Metals 18 gauge and under. Trim, tubing and galvanized pipe.	19419	3.95 ea. /Pkg. 5
24	6 x 3/4 x .035	Metals 18 gauge and under. Trim, tubing and galvanized pipe.	19420	6.95 ea. /Pkg. 5
18	3 x 1/4 x .035	Scroll cutting in light gauge ferrous and non-ferrous metals, wood and aluminum under 1/8" thick.	19426	2.95 ea. /Pkg. 5

**Prices Effective September 1<sup>st</sup> through September 30<sup>th</sup> 2010 - Limit 2 of Any Item Per Customer**



EXCEPTIONAL PRODUCTS, SERVICE AND INNOVATIVE SOLUTIONS

5250-A Naiman Parkway . Solon . OH 44139

090110

1-800-BUY-BOLT . Fax: 631-567-2418 . www.chromate.com